

landscape development application

EDIFY ENERGY PTY LTD & PRECINCT GROUP
STEEL RIVER BATTERY STORAGE FACILITY
Lot 12 DP 280089, 27D RIVERSIDE DRIVE, MAYFIELD WEST.



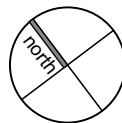
LANDSCAPE CONCEPT PLAN | L101

STEEL RIVER BATTERY STORAGE FACILITY

SITE AREA: 5985 SQM
LANDSCAPED AREA: 1200 SQM
= 20% OF SITE (APPROX)

LEGEND

- SMALL STREET TREE: LAGERSTROEMIA INDICA.
- NEW SMALL TREES: AS SCHEDULED.
- SCREEN PLANTING: AS NOTED ON PLAN.
- ACCENT PLANTS: DORYANTHES.
- MASS PLANTING: AS NOTED ON PLAN.
- GROUND COVER PLANTING: AS NOTED ON PLAN.
- HYDROSEEDING TO EASEMENTS.
- NEW TURF
- CHAINMESH FENCE WITH 3 STRANDS BARBED WIRE. 3M HIGH TOTAL.
- SANDSTONE SPALLINGS: 50-150MM DIAMETER
- SANDSTONE MULCH TO PATH: 10-20MM DIAMETER



H	27/5/21	FOR APPROVAL
G	26/5/21	FOR APPROVAL
F	24/5/21	FOR APPROVAL
E	19/5/21	FOR APPROVAL
D	16/12/20	FOR APPROVAL
C	26/11/20	FOR APPROVAL
B	19/11/20	CLIENT REVIEW
A	13/11/20	PRELIMINARY FOR REVIEW
REV	DATE	COMMENTS

PROJECT:
STEEL RIVER BATTERY STORAGE FACILITY

SITE:
Lot 12 DP 280089, 27D RIVERSIDE DRIVE, MAYFIELD WEST.

CLIENT:
EDIFY ENERGY PTY LTD & PRECINCT GROUP

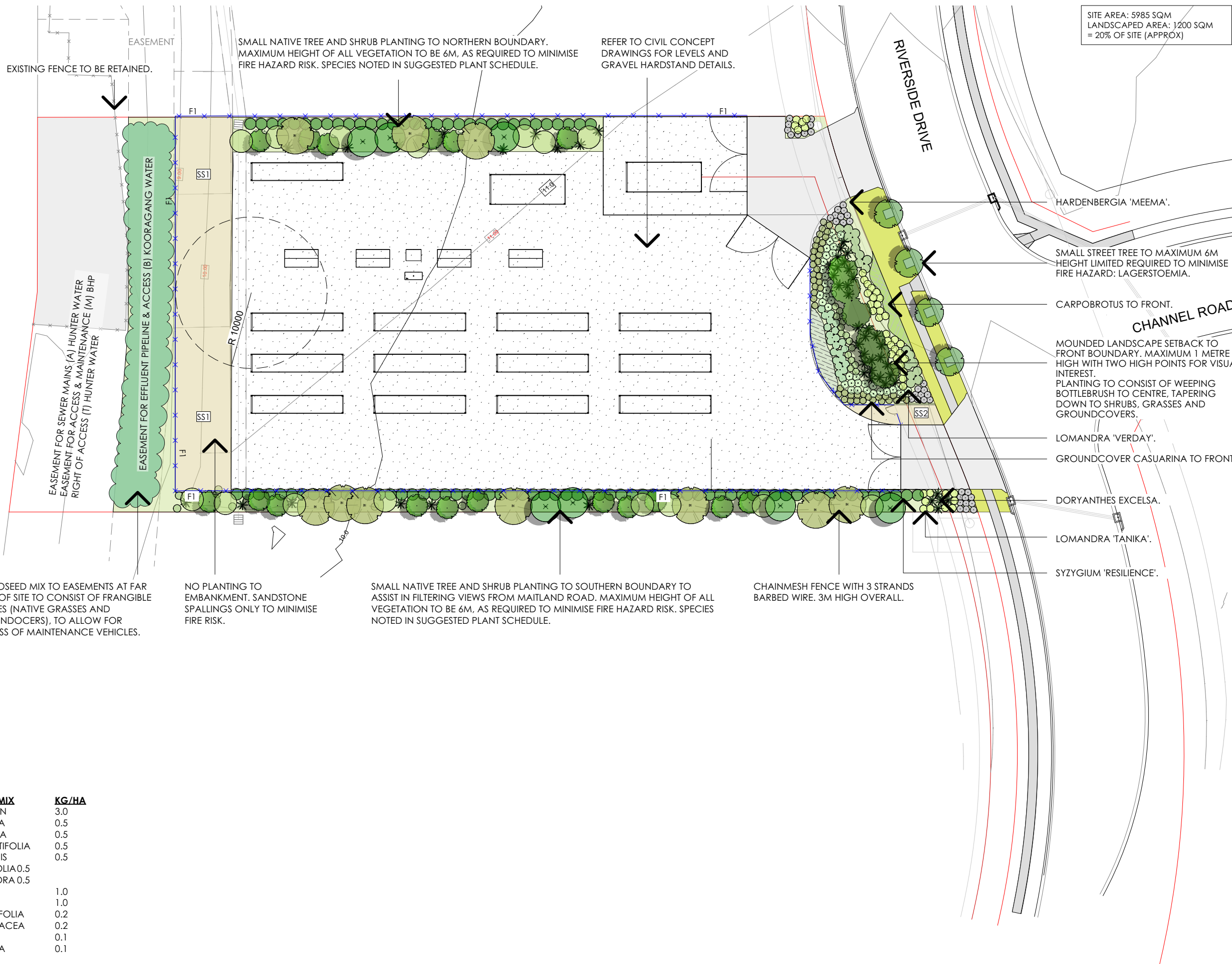
13360.5-SRBSF-DA-REV H.vwx 27/5/21

DRAWN: KM/ GF DATE: 13.11.2020 SCALE: 1:500@A3

JOB NUMBER: 13360.5 DA L101 H PHASE: DWG No: REV:

terras
landscape architects

412 KING STREET NEWCASTLE NSW AUSTRALIA 2300
TERRAS.COM.AU PH: 49 294 926 FAX: 49 263 069



HYDROSEED MIX	KG/HA
CYNODON DACTYLON	3.0
DIANELLA LONGIFOLIA	0.5
IMPERATA CYLINDRICA	0.5
LOMANDRA CONFERTIFOLIA	0.5
LOMANDRA FILIFORMIS	0.5
LOMANDRA LONGIFOLIA 0.5	
LOMANDRA MULTIFLORA 0.5	
POA LABILLARDEIEREI	1.0
THEMEDA AUSTRALIS	1.0
GOODENIA ROTUNDIFOLIA	0.2
HARDENBERGIA VIOLACEA	0.2
HIBBERTIA ASPERA	0.1
KENNEDIA RUBICUNDA	0.1

PLANT PALETTE | L102

STEEL RIVER BATTERY STORAGE FACILITY



Lagerstroemia 'Natchez'



Callistemon 'Dawson River Weeper'



Banksia integrifolia



Syzygium 'Resilience'



Casuarina 'Cousin It'



Doryanthes excelsa



Lomandra 'Tanika'



Westringia 'Zena'



Hardenbergia 'Meema'



Myoporum parvifolium



Carpobrotus glaucescens

PLANT SCHEDULE			
ID	COMMON NAME	BOTANICAL NAME	POT SIZE
Trees			
Bl	Coastal Banksia	Banksia integrifolia	25 Litre
CA	Black Wattle	Callicoma serratifolia	25 Litre
CD	Weeping Bottlebrush	Callistemon 'Dawson River Weeper'	75 Litre
LN	Crepe Myrtle	Lagerstroemia 'Natchez'	100 Litre
Shrubs			
Ba	Wallum Banksia	Banksia aemulea	25 Litre
Bo	Breynia	Breynia oblongifolia	5 Litre
Cb	Better John	Callistemon 'Better John'	5 Litre
Cs	Bottlebrush	Callistemon salignus	25 litre
De	Gymea Lily	Doryanthes excelsa	45 Litre
Sp	Pinnacle	Syzygium 'Pinnacle'	25 Litre
Sr	Resilience	Syzygium 'Resilience'	5 Litre
Wz	Dwarf Coastal Rosemary	Westringia 'Zena'	5 Litre
Ground Covers			
Cg	Pigface	Carpobrotus glaucescens	2.5 Litre
Cc	Cousin It	Casuarina 'Cousin It'	2.5 Litre
Hm	Meema	Hardenbergia 'Meema'	2.5 Litre
Mp	Spreading Myoporum	Myoporum parvifolium 'Fine Leaf Form'	2.5 Litre
Wm	Groundcover Coastal Rosemary	Westringia 'Mundi'	2.5 Litre
Grasses			
Lt	Dwarf Mat Rush	Lomandra 'Tanika'	2.5 Litre
Lv	Verday	Lomandra 'Verday'	2.5 litre

H	27/5/21	FOR APPROVAL
G	26/5/21	FOR APPROVAL
F	24/5/21	FOR APPROVAL
E	19/5/21	FOR APPROVAL
D	16/12/20	FOR APPROVAL
C	26/11/20	FOR APPROVAL
B	19/11/20	CLIENT REVIEW
A	13/11/20	PRELIMINARY FOR REVIEW
REV	DATE	COMMENTS

PROJECT:
STEEL RIVER BATTERY
STORAGE FACILITY

SITE:
Lot 12 DP 280089, 27D
RIVERSIDE DRIVE, MAYFIELD
WEST.

CLIENT:
EDIFY ENERGY PTY LTD &
PRECINCT GROUP

13360.5-SRBSF-DA-REV H.vwx 27/5/21

DRAWN: DATE: SCALE:
KM/ GF 13.11.2020 @A3

JOB NUMBER: PHASE: DWG No: REV:
13360.5 DA L102 H